



WELCOME TO MERREDIN

www.wheatbelttourism.com | 1300 736 283

ACCOMMODATION

1 Barking Salmon Farmstay (25km north of Merredin)	T: 0460 002 543	
2 The Merredin Treasury	T: 0400 412 239	G4
3 Merredin Motel & Gumtree Restaurant	T: 9041 1886	E5
4 Merredin Oasis Hotel	T: 9041 1133	E5
5 Merredin Olympic Motel	T: 9041 1588	E5
6 Merredin Plaza All Suites	T: 9041 1755	H5
7 Merredin Tourist Park	T: 9041 1535	I5
8 Northside Tavern	T: 9041 1635	G4
9 The Lodge at Little Rock	T: 0478 640 155	C6

VISITOR INFORMATION, MUSEUMS & ATTRACTIONS

Central Wheatbelt Visitor Centre	T: 9041 1666	G5
Merredin Military Museum	T: 0429 411 204	G5
Merredin Railway Museum	T: 0417 860 046	G5
Merredin Fine Arts Studio & Gallery		G4
Merredin Peak & Railway Dam		I3
WWII Army Hospital Site		J3
Merredin Silo Art		B5
No 4 Pump Station		A6

SHIRE OF MERREDIN SERVICES

Administration Centre	T: 9041 1611	F4
Cummins Theatre	T: 9041 3295	G4
Merredin Regional Library	T: 9041 1222	F4
Merredin Regional Community & Leisure Centre	T: 9041 3033	G3
Swimming Pool (Nov - Mar)	T: 6140 1257	G5

PARKS, PLAYGROUNDS & PICNIC AREAS

1 Apex Park	F5
2 Pioneer Park	G5
3 Roy Little Park	F4
4 Tamma Parkland	F6
5 Lenihan Park	F6
6 Merredin Peak	I2
7 Peak Play & Café (Indoor)	T: 9041 3033 G3
8 Dog Exercise Park (2 fully fenced and gated exercise yards with water points)	G4
Totadgin Conservation 14km south	

EMERGENCY & MEDICAL SERVICES

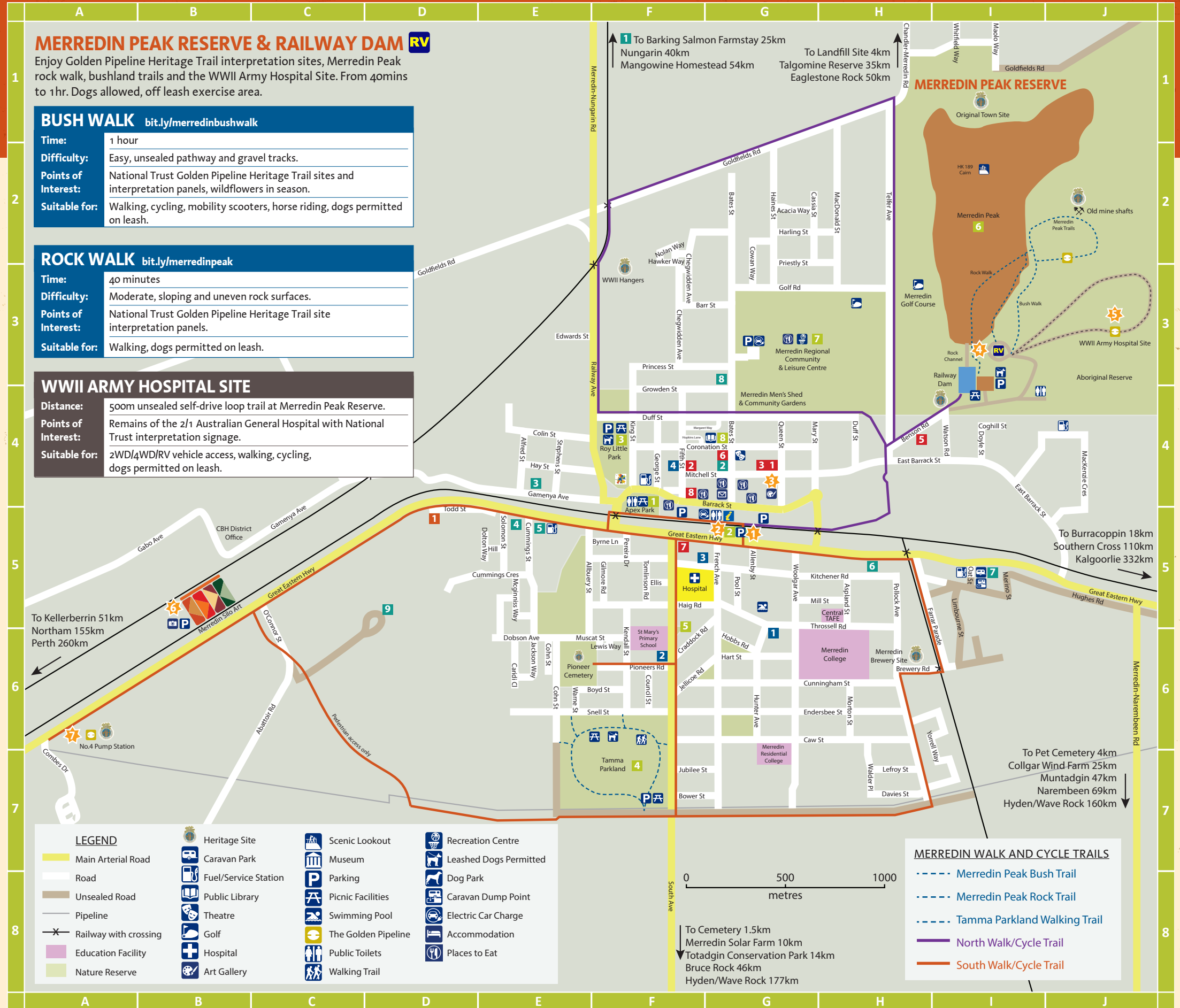
1 Ambulance	T: 000	G4
2 Fire Brigade	T: 000	F4
3 Police Station	T: 131 444	G4
Hospital	T: 9081 3222	F5
5 SES	T: 132 500	H4
6 Karis Medical Group	T: 9041 3126	G4
7 Merredin Medical Centre	T: 9041 2900	F5
8 Aim Dental Group	T: 9041 1735	F4

CHURCHES

1 Church of Christ	G6
2 Roman Catholic	F6
3 Seventh Day Adventist	G5
4 Uniting Church	F4

SERVICES

1 Merredin Veterinary Hospital	T: 9041 1734	D5
Pat & Chat Mobile Vet A/H's and Emergency	T: 0428 212 945	



WALK, CYCLE & MULTI-PURPOSE TRAILS

Enjoy town heritage sites and bushland trails encircling Merredin extending from 8km to 15km or a CBD heritage trail following Merredin's history and heritage sites 1.5km.

NORTH WALK/CYCLE TRAIL

Distance:	8km
Difficulty:	Easy, sealed pathway and gravel tracks.
Points of Interest:	Museums, Merredin Peak, Merredin Community Men's Shed, Merredin Community Garden, Cohn Creek and WWII hangers.
Suitable for:	Walking, cycling, mobility scooters, horse riding, dogs permitted on leash.

SOUTH WALK/CYCLE TRAIL

Distance:	15km
Difficulty:	Easy, sealed pathway and gravel tracks.
Points of Interest:	No 4 Pump Station, CBH Grain Storage and Merredin Silo Art, Brewery Site, Pioneer Cemetery and Tamma Parkland.
Suitable for:	Walking, cycling, mobility scooters, horse riding, dogs permitted on leash.

MERREDIN PEAK RESERVE & RAILWAY DAM

Enjoy Golden Pipeline Heritage Trail interpretation sites, Merredin Peak rock walk, bushland trails and the WWII Army Hospital Site. From 40mins to 1hr. Dogs allowed, off leash exercise area.

BUSH WALK bit.ly/merredinbushwalk

Time:	1 hour
Difficulty:	Easy, unsealed pathway and gravel tracks.
Points of Interest:	National Trust Golden Pipeline Heritage Trail sites and interpretation panels, wildflowers in season.
Suitable for:	Walking, cycling, mobility scooters, horse riding, dogs permitted on leash.

ROCK WALK bit.ly/merredinpeak

Time:	40 minutes
Difficulty:	Moderate, sloping and uneven rock surfaces.
Points of Interest:	National Trust Golden Pipeline Heritage Trail site interpretation panels.
Suitable for:	Walking, dogs permitted on leash.

WWII ARMY HOSPITAL SITE

Distance:	500m unsealed self-drive loop trail at Merredin Peak Reserve.
Points of Interest:	Remains of the 2/1 Australian General Hospital with National Trust interpretation signage.
Suitable for:	2WD/4WD/RV vehicle access, walking, cycling, dogs permitted on leash.

Merredin HERITAGE WALK



West Barrack Street 1920s from the collection of Barbara Hall and Bob Abell.

1. MERREDIN RAILWAY MUSEUM

A must for railway buffs, located in Merredin's historic railway station buildings are exhibits relating to the old days of steam. Wander among massive steam locomotives and rolling stock or climb the signal tower for a view and insight into the amount of signal levers necessary to operate this once major rail hub.

2. PIONEER PARK

Pioneer Park features a 50 foot high timber and iron Railway Water Tower, built in 1893. The water stored at Railway Dam was pumped to the tower and used by steam locomotives until the 1960s. Have a picnic lunch overlooking the Bronze Horse statue commemorating early farming ways.

3. MERREDIN MILITARY MUSEUM

A fine collection of military memorabilia from many conflicts including uniforms, equipment and vehicles, some restored to working order and features 'Huey' a former RAAF and Army Aviation Iroquois UH-1H helicopter from Vietnam War.

4. HITCHING RAIL

Dates from the 1920s when horses were tethered to the rings attached to upright rail line while their owners purchased supplies in Barrack Street.

WATER TROUGH

Was one of 500 horse and dog troughs built Circa 1930s throughout Australia by provision from the will of George Bills who made a fortune making wire mattresses. These dual troughs supplied water for both horses and dogs.

DICK LAW MEMORIAL GARDEN

Established by the Shire of Merredin in 1993 as a memorial to the late FA (Dick) Law in recognition of his service to the community and the publication, The History of the Merredin District.

5. WOMEN'S REST CENTRE

The provision of a Rest Centre for women originated from William Francis Telfer at the time when he was Chairman of the Merredin Road Board. The building had an upgrade in the 1960s.

6. MERREDIN COURTHOUSE

Originally a police station, the current courthouse was built in 1938 with the police station incorporated into the building. In 1962 the police rooms were converted into the magistrate's chambers and children's court and new clerk of courts office built. In 1997 the building was renovated to include a holding cell, new magistrate's chambers and courtyard.

7. FORMER MERREDIN TOWN HALL

Originally a timber hall built on this site opened in 1913, the remaining brick and tile structure built at the front of the Hall in 1925 was the former Roads Board Office. The clock tower's war memorial designed by J.W Benson, Queen Victoria's clockmaker, opened in 1928 and is a smaller replica of Big Ben in Westminster, UK.

FORMER NATIONAL BANK

Now Middleton Accountants building, was originally a house and business built in 1923 with rendered brick and a hipped gable roof of Marseille Tiles.

8. FORMER OCHILTREE MOTORS

Now the Palace Chinese Restaurant, built in 1937 with a corrugated iron roof and leadlight windows. A good example of a 1930s designed garage with a quarter circle driveway when motoring was relatively new to Merredin.

9. CUMMINS THEATRE

Salvaged and rebuilt by brewer James Cummins with bricks from several old Coolgardie Hotels and the stage, fly tower, and pressed metal ceiling from the Tivoli Theatre in Coolgardie. Cummins Theatre opened in Merredin on the 11/10/1928. James and later, his daughter Alice, operated the brewery in Merredin until the 1940s. They are buried at Pioneer Cemetery.

33 BATES STREET

First built as the Agricultural Bank in 1928, WA's bank lending to farmers. The front facade of the building has architectural significance, being constructed at a time when there was confidence in the future of Merredin.

10. FORMER NORTH MERREDIN SCHOOL

The Merredin State School was moved from its site halfway between town and No 4 Pumping Station to this site in 1911. With population growth, buildings were progressively extended and replaced. Another primary school was built and named South Merredin, this building becoming North Merredin. In 1954 it was extended to a Junior High School. In 1957 a new High School was built and North Merredin reverted to a Primary again. The school closed in 2012 after amalgamating with the new Merredin College. In 2016 the building was refurbished to accommodate the Merredin Regional Library.

11. CNR BATES AND CORONATION STREETS

Built as an agricultural machinery dealership, Sunshine Harvester and Hugh McKay. The front facade has a plaster decoration of the rising or setting sun, the symbol of Sunshine Harvester. Now Karis Medical Group.

12. 30 BATES STREET

Now accommodation The Merredin Treasury, this residence formerly the English, Scottish & Australian Bank was built in 1928. It has been a retail shop, doctor's surgery and political office.

MERREDIN FIRE STATION

Designed by KC Duncan and opened 19/06/1935, it has a residence attached with a central garage.

13. FORMER MERREDIN HOTEL

Built on this site, the Merredin Hotel was opened by Mr Angel the first licensee on the 1/04/1907. Mr T Duff purchased the hotel a year later and it then became known as Duffs' Hotel. This impressive building consisted of 70 bedrooms, 7 sitting rooms, 2 dining rooms, 7 bathrooms, 3 bars and a business arcade. Duffs' Hotel was demolished in 1974.

14. MAPLE HOUSE, 9 BATES STREET

This building has a rich history dating back to 1921 and known as Maple Tree Tea & Dining Rooms in its hey-day. The business hosted many special events and was a meeting place with quality accommodation on its second level. Now Merre Local retailing local produce.

15. POST OFFICE & POST MASTER'S RESIDENCE 1913

The Post Office would have been originally red brick with rendering that has now been plastered over. The original corner entrance has now been bricked in. The Post Office was the first major public building in Merredin. Tucked behind the Post Office is the original Post Masters residence enjoying a renaissance as a café.

16. FORMER LISTER HOUSE

This two-storey shop's roof top was chosen for an air observer's post during WWII. For many years the building operated as Millar's Pharmacy until May 1995 when the pharmacy relocated to larger premises.

17. COMMERCIAL HOTEL

A large two-story hotel built in 1924 originally had 25 bedrooms. In 1925 another wing was built with an additional 16 bedrooms. The original

cellar leading down below the bar has a clear viewing cover in the front bar room.

18. WAR MEMORIAL CENOTAPH

Located within a traffic island on Barrack Street near Fifth Street, the monument sits on a plinth with the names of the fallen soldiers on the wings along with a plaque commemorating fallen of later wars.

19. LONG TAN VIETNAM MEMORIAL

Located on the southern end of Roy Little Park, near the Shire of Merredin Council Chambers. The Long Tan Vietnam Reflection Pond is a dedication to the soldiers and their service during the Vietnam War. Constructed in 2006 marking the 40th Anniversary of the Battle of Long Tan.

PUBLIC ART

- 1 Merredin Community Mural designed by Mel McVee, Public Toilets.
- 2 Remembrance Mural Merredin Military Museum, Sheree Lowe
- 3 Mary St Roundabout Mosaic, Michelle Murfit
- 4 Reconciliation Mural Merredin Police Station, designed by Marika Hayden
- 5 Cummins Theatre Painted Electrical Box, a youth project.
- 6 Mural Once Upon a Time on Bates Street (next to Post Office), Jessie Spring
- 7 Daisy Lane Op Shop Mural, Sheree Lowe
- 8 Merredin Shire Mosaic, Ann Sutherland
- 9 Silos, Community project
- 10 Toddy the recycling sheep, Karni Engineering

